



FLAMBEAU

Lighting...New Orleans Style



2013 COLLECTION



FLAMBEAU

Lighting...New Orleans Style



Paul Grüer

"I have always been influenced by the city of New Orleans. The patina of age and gentle decay has found its way into the finish of my work. Like the city, sophisticated, fun and always just a little off-center".

Whether as an art gallery director, sculptor, or designer of fine jewellery, this long-time resident of the "Big-Easy" and his work, have for years been an integral part of the New Orleans art scene. Chosen as the top artist in New Orleans and recipient of the WYES Patron Artist Award, Grüer has also been nationally recognised winning Alpha Awards for his textile and lighting designs.

Grüer's use of lighting as an expression of his creativity first came about when a friend challenged him to create a chandelier to look like a pair of earrings he had designed for her. Pleased with the results, he soon began creating other sculptural lighting pieces inspired by his jewellery designs, and for years, these one-of-a-kind custom pieces were commissioned and sold only through a hand full of select art galleries and interior designers. In 2001, Grüer entered into a licensing agreement with Flambeau Lighting to create an ongoing series that would be crafted and finished by artisans, in much the same manner as his original Studio pieces.

Today, Paul Grüer's "FLAMBEAU Lighting Collection" is a gallery of sculptural, functional art that manifests itself in the form of table lamps, floor lamps, chandeliers, pendants, mirrors and sconces. He has created a collection that is certain to add intrigue to any interior design.



The Designers



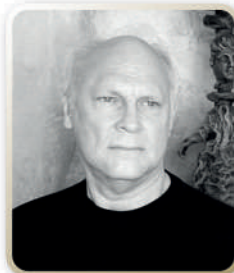
Elaine Gleason

Elaine Gleason designs and constructs striking lighting fixtures for both residential and commercial interiors. These sculptures are inspired by the rhythm and ambiance of her native New Orleans.

For 10-years Gleason has focused on the design and manufacture of metal furniture and lighting at her New Orleans studio. Her designs are evocative of the culture she lives in; the classic architecture, the indigenous music, and lush foliage that saturates New Orleans.

Gleason's art has been shown at the New Orleans Jazz Fest, Art in Bloom at the New Orleans Museum of Art, D.O.C.S. Gallery, New Orleans Academy of Fine Art, Philadelphia Rosen Show, as well as at the International Atlanta Gift Show, New York International Gift Show and the High Point Furniture Market.

She studied art at the University of Arizona, and received here BFA degree, with a focus on Sculpture, from the University of Georgia.



Benjamin Burts

There is a life force palpable in every Benjamin Burts creation. From a genesis of cold clay evolve works of art that exude an almost human warmth and texture. Burts says he doesn't put it there; he says it is there.

"I work with clay in a very free, spontaneous way, allowing it to become what it wants to become. I start with an idea, but the idea only motivates me to begin. Then it becomes a collaboration between the clay and me to see what it is supposed to be," says Burts.

Faces and spiritual forms rise ethereally to the surface in many of his designs and through a unique surfacing technique after kiln firing, he applies gold and silver colouring, "colours natural to the surface, shape and form," remarks Burts.

His work has been exhibited in fine galleries across the USA. He is inspired by neoclassic design blended with the culture of the New Orleans Garden district.



FLAMBEAU

Lighting...New Orleans Style

COMBINING ART AND DESIGN WITH INTRIGUING FUNCTION, THE DESIGNERS AT FLAMBEAU HAVE CREATED A STUNNING COLLECTION OF LUMINAIRES.

FLAMBEAU SHOWCASES THE WORKS OF RENOWNED NEW ORLEANS DESIGNERS PAUL GRÜER AND ELAINE GLEASON, AS WELL AS BATON ROUGE SCULPTOR, BENJAMIN BURTS. EACH DESIGNER AND ARTIST HAS UNITED SOPHISTICATED FORMS AND SHAPES WITH DISTRESSED FINISHES OF GOLD AND SILVER PATINAS TO CREATE 21ST CENTURY ANTIQUES.

WITH METICULOUS ATTENTION-TO-DETAIL AND QUALITY MANUFACTURING, FLAMBEAU'S LAMPS, CHANDELIERS, PENDANTS, AND SCONCES WILL ADD A TOUCH OF INTRIGUE AND WHIMSY TO ANY ROOM. OFTEN FLAMBEAU LIGHTING'S DESIGNS BECOME THE CONVERSATION PIECE IN THE MOST DISTINCTIVE INTERIOR ENVIRONMENTS.

IN MARCH 2012, FLAMBEAU HAVE PARTNERED WITH ELSTEAD LIGHTING AS THEIR EUROPEAN AND SPECIALIST 220-240V MARKET DISTRIBUTOR.



ANEMONE P, FL & TL	17	FLEUR DE LIS TL	32	NETTLE TL & FL	23
ARMORY TABLE	35	FRAGMENT P & DRUM	24-25	PALM LUXE SC	34
AUDUBON SC & CH	16	FRAGMENT TL, FL & SC	26-29	POMPADOUR LUXE TL	33
BIENVILLE TL	31	ISABELLE BOWL	35	REMI CH	7
BIRDLAND TL	33	KRISTAL CH & TL	6	ROCHEBLAVE BOWL	35
BON VIVANT CH8, CH5 & CH3	10-11	LA FLEUR FL & SC	18	RODRIGUE TL	32
CARYATID TL	30	LA FLEURETTE TL	33	SIMONE CH & SC	15
CROWN CH & LAN	14	MAIDEN VOYAGE CH	7	SOUTH BEACH FL & P	19
DIEGO CH & SC	8-9	MIGNON CH	4-5	TECHE TL	32
DUMAINE SC	34	MOSAIC CH	12-13	VENETIAN TABLE	35
FLAMBEAU SC	34	NETTLE LUXE TL & FL	20-22	ZEUS MIRRORS	18

DISCLAIMER:

Each Flambeau item is hand finished by our craftsmen. Because of the handcrafted nature, it is understood that minor variations in finishes are inevitable and that these differences are part of what makes each piece a unique work of art.

MIGNON
CH1111 CHANDELIER





“ Years of walking down Royal Street in the French Quarter, seeing elegant French antiques and palm trees hidden behind garden walls, has inspired the Mignon chandelier. A subtle mix of the time worn textures and quietly elegant shapes has come together to give a hint of the secret luxury of times gone by. ”

Paul Grüer



MIGNON CH1111 CHANDELIER

CRYSTAL TEARDROPS ACCENT
ANTIQUE GOLD LEAF FINISHED
BOBECHEs, AND STAR DETAILS
WITH SILVER RINGS.

H: 737MM W: 635MM D: 635MM
CHAIN: 1829MM
8 X E14 60W
© 2007 PAUL GRÜER



KRISTAL LUXE CH1040 CHANDELIER

FACETED GLASS NESTS EXTEND
OUTWARD BELOW EACH LIGHT
ON THIS CHANDELIER.
SILVER BANDS BORDER THE
ANTIQUED SHADE BODY.

H: 775MM W: 762MM D: 762MM
CHAIN: 1829MM
6 X E27 60W
© 2007 PAUL GRÜER

KRISTAL TA1045 TABLE LAMP

FEATURING AN INVERTED PUTTY
COLOUR ACID WASHED SHADE, AND
DELICATE GOLD LEAF BRANCHES
THAT SPIKE CUT GLASS JEWELS ON
GOLD LEAF METAL STEM.

H: 914MM W: 406MM D: 406MM
1 X E27 60W
© 2002 PAUL GRÜER





MAIDEN VOYAGE CH1016 CHANDELIER

SIX-ARM CHANDELIER ADORNED
WITH CRYSTALS AND SILVER SHADES.

H: 902MM W: 813MM D: 813MM
CHAIN: 1829MM
6 X E27 60W
© 2007 PAUL GRÜER



REMI CH1109 CHANDELIER

SILVER AND CREAM ACCENTS
COMBINED WITH SCULPTED
ELEMENTS MAKE THIS FIVE-ARM
CHANDELIER UNIQUE. THE SHADES
ALSO FEATURE A GRAY AND WHITE
CRACKLE EFFECT FINISH, WHICH
COMPLEMENT THE ACCENTS.

H: 584MM W: 762MM D: 762MM
SHADES: 152MM X 203MM
CHAIN: 1829MM
5 X E14 60W
© 2007 PAUL GRÜER



DIEGO
CH1153-4 CHANDELIER





DIEGO CH1153-4 CHANDELIER

TAUPE SHADES ENCIRCLED
BY GOLD TWISTED BARBS CROWN
THE CRYSTAL SPIKES OF THIS
UNIQUE FOUR-ARM CHANDELIER.

H: 737MM W: 711MM D: 711MM
SHADES: 178MM X 203MM
CHAIN: 1829MM
4 X E14 60W
© 2008 PAUL GRÜER



DIEGO SC1153-1 SCONCE

TAUPE SHADE AND GOLD TWISTED
BARBS HIGHLIGHT THIS WALL
SCONCE WITH A CRYSTAL ACCENT.

H: 610MM W: 229MM D: 330MM
1 X E27 60W
© 2008 PAUL GRÜER



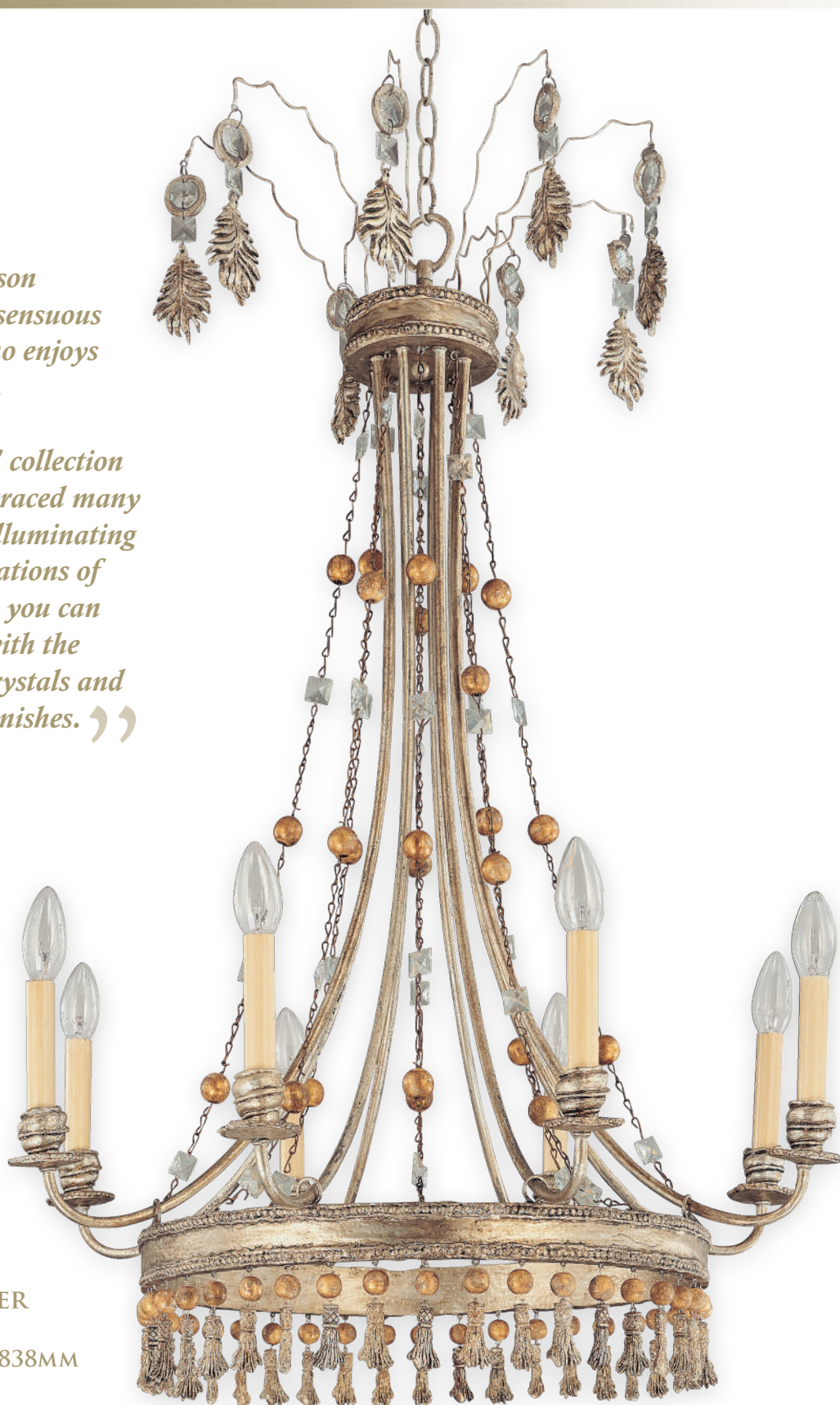
“ *Bon Vivant: A person devoted to refined sensuous enjoyment, one who enjoys the luxuries in life.*

The "Bon Vivant" collection could have easily graced many an elegant room, illuminating late evening celebrations of days gone by. Now you can illuminate yours with the gentle sparkle of crystals and subtle time worn finishes. ”

Paul Grüber

BON VIVANT CH1160-8 CHANDELIER

H: 940MM W: 838MM D: 838MM
CHAIN: 1829MM
8 X E14 60W
© 2008 PAUL GRÜER





BON VIVANT CH1160-3 CHANDELIER

H: 660MM W: 483MM D: 483MM
CHAIN: 1829MM
3 X E14 60W
© 2008 PAUL GRÜER



BON VIVANT CH1160-5 CHANDELIER

THE BON VIVANT COLLECTION TIES CLASSIC DESIGN WITH MODERN. IT FEATURES A GILDED BODY WITH CANDLE-LIKE FIXTURES ADORNED WITH CRYSTALS, TASSELS AND SCULPTED BOBECHÉ.

H: 787MM W: 711MM D: 711MM
CHAIN: 1829MM
5 X E14 60W
© 2008 PAUL GRÜER

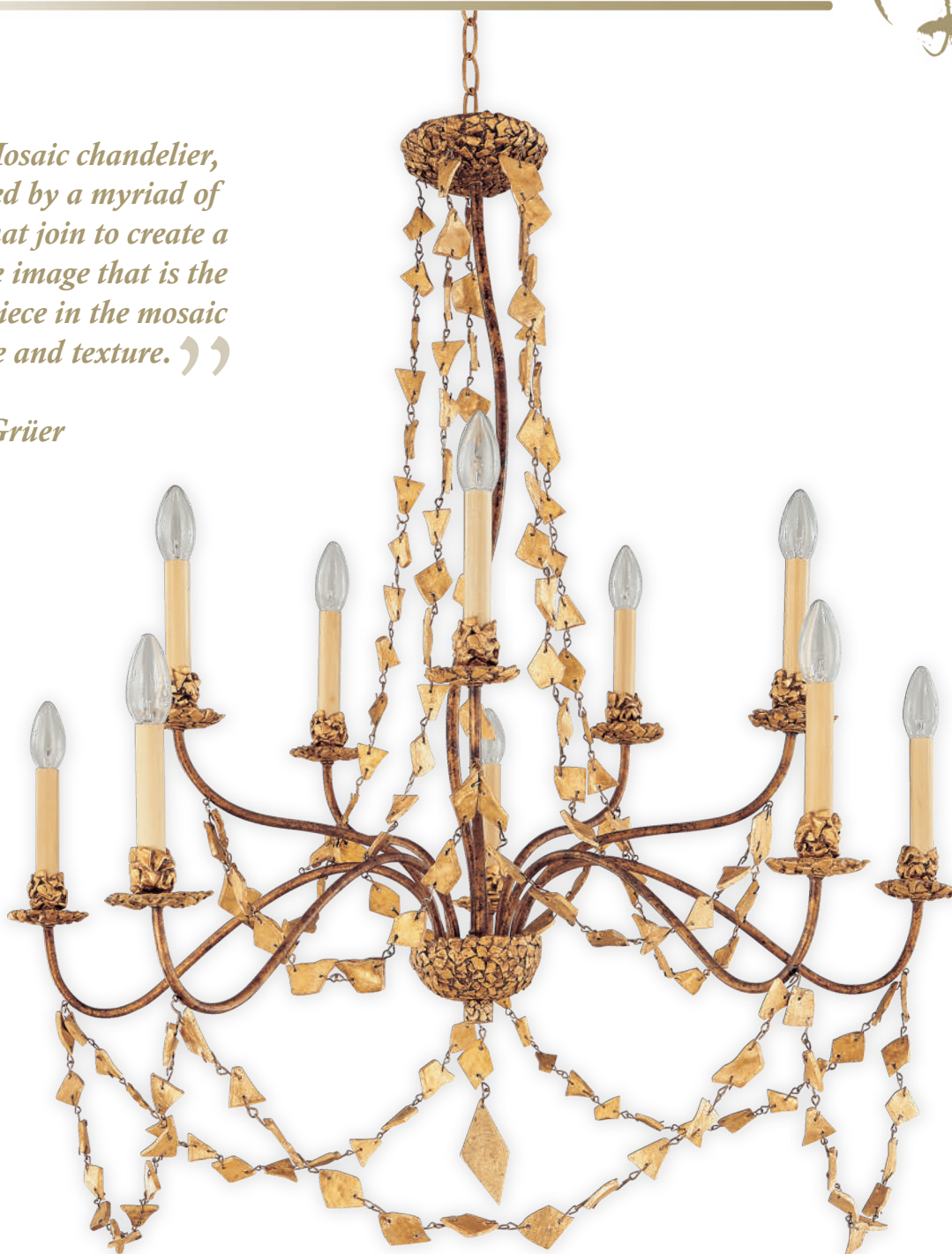


MOSAIC
CH1158-10 CHANDELIER



“ *The Mosaic chandelier, inspired by a myriad of tiles that join to create a unique image that is the final piece in the mosaic of style and texture.* ”

Paul Grüer



MOSAIC

CH1158-10 CHANDELIER

STRANDS OF MOSAIC JEWELS DETAIL
THIS TEN ARM CHANDELIER.

H: 991MM W: 940MM D: 940MM
CHAIN: 1829MM
10 X E14 60W
© 2008 PAUL GRÜER



CROWN

CH1154-4 CHANDELIER

SILVER FLEUR DE LIS AND SCULPTED ELEMENTS ADD CHARACTER AND STYLE TO THIS BENJAMIN BURTS' FOUR-ARM CHANDELIER.

H: 584MM W: 711MM D: 711MM
CHAIN: 1829MM
4 X E14 60W
© 2008 BENJAMIN BURTS

CROWN

LAN1154-4 LANTERN

SILVER FLEUR DE LIS AND SCULPTED ELEMENTS ADD CHARACTER AND STYLE TO THIS BENJAMIN BURTS' FOUR-LIGHT LANTERN DESIGN.

H: 787MM W: 330MM D: 330MM
CHAIN: 1829MM
4 X E14 60W
2008 BENJAMIN BURTS





SIMONE SC1162-6 CHANDELIER

A CIRCULAR EARTHEN BASE
SPRINGS GILDED BLOSSOMS ON
THIS SIX-ARM CHANDELIER WITH
CANDLE-LIKE FEATURES.

H: 762MM W: 686MM D: 686MM
CHAIN: 1829MM
6 X E14 60W
© 2008 ELAINE GLEASON



SIMONE SC1148-2 SCONCE

THE GRAY BODY OF THIS
TWO-ARM WALL SCONCE IS
ACCENTED BY A GOLD SCULPTED
BLOSSOM ELEMENT, GILDED LEAVES,
AND CANDLE-LIKE FIXTURES.

H: 914MM W: 432MM D: 229MM
2 X E14 60W
© 2008 ELAINE GLEASON



AUDUBON II SC1015-1 SCONCE

BLACK AND TAN STRIPED
SHADE TOPS GOLD ANEMONE
SCULPTED ELEMENT AND
SILVER BALL ON THIS WALL
SCONCE WITH A METAL STAR-
SHAPED WALL PLATE.

H: 533MM W: 254MM
D: 229MM
1 X E27 60W
© 2008 PAUL GRÜER



AUDUBON CH1015 CHANDELIER

FOUR-BRANCH CHANDELIER
WITH GOLD LEAF ANEMONES
AND WIRY COPPER TWIG-
LIKE FLOURISHES SPIKED
WITH SILVER GILDED LEAVES
GROUNDED IN AN INVERTED
PYRAMID BASE. CYLINDRICAL
SHADES. BLACK AND GOLD
WASHED STRIPES.

H: 914MM W: 991MM
D: 991MM
CHAIN: 1829MM
4 X E27 60W
© 2001 PAUL GRÜER





ANEMONE II PD1006 MINI PENDANT

THE TAUPE AND CREAM STRIPED
GLAZE CYLINDRICAL SHADE
IS SPIKED WITH A SILVER LEAF
SCULPTED BLOSSOM ELEMENT
AND GOLD BALL FINIAL
ACRYLIC DIFFUSER.

HAND PAINTED METAL SHADE
H: 203MM W: 152MM D: 152MM
1 x E27 100W
SUPPLIED WITH 305MM
(2) & 152MM (2) STEMS FOR
ADJUSTABLE HEIGHT
© 2009 PAUL GRÜER



ANEMONE FL1006 FLOOR LAMP

STAR SHAPED BASE WITH
GOLD LEAF, PUTTY AND
CREAM STRIPED METAL
STEM SPIKED WITH A
GOLD LEAF BLOSSOM.
INVERTED CONE SHADE
WITH PUTTY AND CREME
STRIPED GLAZE MEDIUM
AND GOLD LEAF BALL-
SHAPED FINIAL.

H: 1854MM W: 381MM
D: 381MM
1 x E27 100W
© 2001 PAUL GRÜER



ANEMONE TA1006 TABLE LAMP

STAR-SHAPED BASE WITH
GOLD LEAF, TAUPE AND
CREAM STRIPED METAL
STEM SPIKED WITH A GOLD LEAFED
SCULPTED BLOSSOM ACCENT
THIS TABLE LAMP. SHADE IS
INVERTED REPEATING THE
TAUPE AND CREAM STRIPED
GLAZE MEDIUM, GOLD LEAF
BALL- SHAPED FINIAL.

H: 737MM W: 254MM
D: 254MM
1 x E27 100W
© 2001 PAUL GRÜER





LA FLEUR

FL1009 FLOOR LAMP

GOLD LEAF SQUARES SIMULATE A NEW ORLEANS SIDEWALK TO FORM THE DECORATIVE PLATE BASE. GOLD LEAF BLOSSOM BURSTS FROM BLACK AND PUTTY STRIPED STEM. BLACK AND PUTTY STRIPED SHADE, TOPPED WITH GOLD LEAF BALL FINIAL.

H: 1852MM W: 229MM D: 229MM
1 x E27 100W
© 2001 PAUL GRÜER



ZEUS - MR 1002

BLACK AND BONE MIRROR

A FLAME FINIAL CROWNS THIS TRIANGULAR MIRROR, GROUNDED WITH BALL FINIALS. THE FRAME IS FINISHED IN A BLACK AND BONE COLOUR WASH, THEN TRIMMED IN GOLD LEAF.

H: 810MM W: 560MM
© 2002 PAUL GRÜER



LA FLEUR

SC1009-1 SCONCE

THE GOLD AND SILVER BLOSSOM BOBECHE
ON THIS WALL SCONCE IS TOPPED WITH
TAUPE AND CREAM STRIPED SHADE AND
FEATURES A STAR-SHAPED WALL PLATE.

H: 635MM W: 203MM D: 279MM
1 x E27 60W
© 2008 PAUL GRÜER



ZEUS - MR 1003

PUTTY AND CREAM MIRROR

A FLAME FINIAL CROWNS THIS
TRIANGULAR MIRROR, GROUNDED
WITH BALL FINIALS. THE FRAME IS
FINISHED IN A PUTTY AND CREAM
COLOUR WASH, THEN TRIMMED IN
GOLD LEAF.

H: 810MM W: 560MM
© 2002 PAUL GRÜER



SOUTH BEACH FL1019 FLOOR LAMP

GOLD LEAF AND A BLACK STRIPED STEM SUPPORTED BY STAR SHAPED BASE ETCHED TO RESEMBLE COBBLESTONE STREETS, WITH GOLD LEAF BLOSSOM AND FINIAL. PAINTED BLACK AND PUTTY STRIPES OUTLINE THE SHADE.

H: 1727MM W: 356MM
D: 356MM
1 x E27 100W
© 2002 PAUL GRÜER



SOUTH BEACH PD1019 PENDANT

THE INVERTED SHADE OF THIS CHARMING PENDANT FEATURES BLACK AND CREAM STRIPES AND IS DETAILED WITH A SCULPTED FINIAL. ACRYLIC DIFFUSER.

H: 229MM W: 381MM D: 381MM
1 x E27 100W
HAND PAINTED METAL SHADE
2 x 305MM + 2 x 152MM STEMS FOR
ADJUSTABLE HEIGHT
© 2009 PAUL GRÜER





NETTLE LUXE TA1030-S TABLE LAMP

SILVER AND CREAM STRIPED
SHADES AND SPIKED NETTLE
FINIAL TOP THIS DISTINCTIVE
TWO-ARM TABLE LAMP.

H: 1016MM W: 508MM
D: 279MM
SHADES: 178MM X 381MM
2 X E27 60W
© 2002 PAUL GRÜER



NETTLE LUXE TA1030 TABLE LAMP

GOLD LEAF AND TAUPE STRIPED
SHADES AND SPIKED NETTLE
FINIAL TOP THIS DISTINCTIVE
TWO-ARM TABLE LAMP.

H: 1016MM W: 508MM D: 279MM
SHADES: 178MM X 381MM
2 X E27 60W
© 2002 PAUL GRÜER



NETTLE LUXE FL1048-S FLOOR LAMP

JAGGED STAR SHAPED BASE ETCHED
IN GOLD LEAF TO RESEMBLE
COBBLESTONE STREETS. GOLD LEAF
DECORATIVE STEM FINIALS, BEIGE
AND SILVER LEAF STRIPED SHADES.

H: 1981MM W: 635MM D: 356MM
2 x E27 60W
© 2002 PAUL GRÜER



NETTLE LUXE FL1048-G FLOOR LAMP

JAGGED STAR SHAPED BASE ETCHED IN GOLD
LEAF TO RESEMBLE COBBLESTONE STREETS.
GOLD LEAF DECORATIVE STEM FINIALS,
GOLD AND TAUPE STRIPED SHADES.

H: 1981MM W: 635MM D: 356MM
2 x E27 60W
© 2002 PAUL GRÜER



NETTLE

TA1024 TABLE LAMP

CONSOLE LAMP FEATURING A GOLD LEAF SCULPTED BASE AND METAL STEM WITH SCULPTED BLOSSOM ELEMENT; CYLINDRICAL CREAM SHADE IN PUTTY WASH TOPPED WITH GILDED BLOSSOM FINIAL.

H: 1016MM W: 165MM D: 165MM
1 x E27 100W
© 2001 PAUL GRÜER



NETTLE

FL1024-S FLOOR LAMP SILVER

JAGGED STAR SHAPED BASE ETCHED IN GOLD/SILVER LEAF TO RESEMBLE COBBLESTONE STREETS INDIGENOUS TO NEW ORLEANS. TOPPED WITH GOLD/SILVER LEAF SCULPTED FINIALS ABOVE STRIPED METAL SHADES.

H: 1959MM W: 464MM
D: 464MM
1 x E27 100W
© 2008 PAUL GRÜER



NETTLE

FL1024-G FLOOR LAMP



FRAGMENT

PD1052-S SILVER PENDANT

DECORATIVE SILHOUETTE OF A FRAGMENTED
HEAD FINIAL ATOP A CYLINDRICAL SHADE.
ACRYLIC DIFFUSER.

H: 362MM W: 203MM D: 203MM
HAND LEAFED & GLAZED SILVER METAL SHADE
1 x E27 100W
2 x 305MM + 2 x 152MM STEMS FOR
ADJUSTABLE HEIGHT
© 2009 PAUL GRÜER



FRAGMENT

PD1052G-S GOLD PENDANT

DECORATIVE SILHOUETTE OF A FRAGMENTED
HEAD FINIAL ATOP A CYLINDRICAL SHADE.
ACRYLIC DIFFUSER.

H: 362MM W: 203MM D: 203MM
HAND LEAFED & GLAZED GOLD METAL SHADE
1 x E27 100W
2 x 305MM + 2 x 152MM STEMS FOR
ADJUSTABLE HEIGHT
© 2009 PAUL GRÜER





FRAGMENT

PD1052G-D GOLD PENDANT

DECORATIVE COLUMN FRAGMENT
FINIAL ATOP A CYLINDRICAL
DRUM SHADE ACRYLIC DIFFUSER.

H: 229MM W: 381MM D: 381MM
HAND LEAFED & GLAZED GOLD
METAL SHADE
1 x E27 100W
2 x 305MM + 2 x 152MM STEMS
FOR ADJUSTABLE HEIGHT
© 2009 PAUL GRÜER



FRAGMENT

PD1052-D SILVER PENDANT

DECORATIVE COLUMN FRAGMENT
FINIAL ATOP A CYLINDRICAL
DRUM SHADE. ACRYLIC DIFFUSER.

H: 229MM W: 381MM D: 381MM
HAND LEAFED & GLAZED SILVER
METAL SHADE
1 x E27 100W
2 x 305MM + 2 x 152MM STEMS
FOR ADJUSTABLE HEIGHT
© 2009 PAUL GRÜER



FRAGMENT
TA1013-G TABLE LAMP



FRAGMENT TA1013-S TABLE LAMP

SILVER LAMP FEATURES MOULDED
SILHOUETTES OF A TORSO, CROSS
AND FACE CAST FROM ORIGINAL
PIECES OF ANCIENT STONEWORK.

H: 1016MM W: 229MM D: 229MM
1 X E27 60W
© 2001 PAUL GRÜER



FRAGMENT TA1013-G TABLE LAMP

GOLD-LEAF LAMP FEATURES
MOULDED SILHOUETTES OF A
TORSO, CROSS AND FACE CAST
FROM ORIGINAL PIECES OF ANCIENT
STONEWORK FRAGMENTS.

H: 1016MM W: 229MM D: 229MM
1 X E27 60W
© 2001 PAUL GRÜER



“ One of my favourite things to do is search the French Market in the Quarter to find unique treasures, fragments from the past. Some of these treasures have found a home in the ‘Fragment’ Collection. A touch of the old worked into new designs that bring a bit of history and New Orleans charm to any interior design. ”

Paul Grüber



FRAGMENT

SC1052-GOLD SCONCE

BURNISHED GOLD LEAF WALL SCONCE FEATURES SCULPTED DECORATIVE ELEMENTS OF SILHOUETTES OF TORSO, HEAD AND COLUMN FRAGMENTS AND A GOLD CYLINDRICAL SHADE.

H: 965MM W: 152MM D: 229MM
1 x E27 60W
© 2003 PAUL GRÜER

FRAGMENT

FL1013-G FLOOR LAMP

GOLD LEAF WITH UMBER GLAZE SETS OFF A DRUM SHADE, STEPPED BASE AND STEM STUDDED SILHOUETTES OF A TORSO, CROSS AND FACE CAST FROM ORIGINAL PIECES OF ANCIENT STONWORK FRAGMENTS.

H: 1702MM W: 381MM D: 381MM
1 x E27 100W
© 2001 PAUL GRÜER





FRAGMENT SC1052-SILVER SCONCE

BURNISHED SILVER LEAF WALL SCONCE FEATURES SCULPTED DECORATIVE ELEMENTS OF SILHOUETTES OF TORSO, HEAD AND COLUMN FRAGMENTS AND A SILVER CYLINDRICAL SHADE.

H: 965MM W: 152MM D: 229MM
1 x E27 60W
© 2003 PAUL GRÜER



FRAGMENT FL1013-S FLOOR LAMP

SILVER LEAF WITH UMBER GLAZE SETS OFF A DRUM SHADE, STEPPED BASE AND STEM STUDDED SILHOUETTES OF A TORSO, CROSS AND FACE CAST FROM ORIGINAL PIECES OF ANCIENT STONework FRAGMENTS.

H: 1702MM W: 381MM D: 381MM
1 x E27 100W
© 2001 PAUL GRÜER



CARYATID

TA1017-S TABLE LAMP

STACKED BASE ON SWIRL FEET, WITH
A SCULPTED SILVER LEAF METAL STEM
INFLUENCED BY 18TH CENTURY
CARYATID ELEMENT. UMBER GLAZE
ADDS RICHNESS TO THE SILVER SHADE.

H: 711MM W: 229MM D: 229MM
1 x E27 60W
© 2001 PAUL GRÜER



CARYATID

TA1017 TABLE LAMP

STACKED BASE ON SWIRL FEET,
WITH A SCULPTED GOLD LEAF
METAL STEM INFLUENCED BY 18TH
CENTURY CARYATID ELEMENT.
UMBER GLAZE ADDS RICHNESS TO
THE GOLD LEAF SHADE.

H: 711MM W: 229MM D: 229MM
1 x E27 60W
© 2001 PAUL GRÜER



BIENVILLE

TA1126M TABLE LAMP

ANTIQUED MUSTARD AND GOLD
ADORN THE BASE, TOPPED WITH
A LIGHT TAN OVERSIZED SHADE.

H: 762MM W: 457MM D: 457MM
1 x E27 100W
© 2007 BENJAMIN BURTS



BIENVILLE

TA1126 TABLE LAMP

FEATURING A GOLD AND SILVER
BODY TOPPED BY AN OVERSIZED
CYLINDRICAL GILDED SHADE.

H: 762MM W: 457MM D: 457MM
1 x E27 100W
© 2007 BENJAMIN BURTS



RODRIGUE
TA1134 TABLE LAMP

SMALL, BELL SHAPED TABLE LAMP IS TOPPED BY A GOLD FLEUR DE LIS AND A BLACK SHADE WITH GOLD SPATTER ACCENTS.

H: 610MM W: 305MM D: 305MM
1 x E27 60W
© 2008 BENJAMIN BURTS

TECHE
TA1131 TABLE LAMP

DISTRESSED GOLD TABLE LAMP TOPPED BY A SCULPTED FLEUR DE LIS. BLACK SHADE ACCENTED WITH GOLD SPATTER AND GOLD STRIPED BORDER.

H: 914MM W: 406MM D: 406MM
1 x E27 100W
© 2008 BENJAMIN BURTS



FLEUR DE LIS
TA1130 TABLE LAMP

PETITE TABLE LAMP WITH GOLD AND SILVER BODY. SCULPTED FLEUR DE LIS SITS ATOP A SILVER BALL AND GOLD BASE. BLACK SHADE WITH GOLD SPATTER ACCENTS.

H: 559MM W: 305MM
D: 305MM
1 x E27 60W
© 2008 BENJAMIN BURTS





LA FLEURETTE

TA1077 TABLE LAMP

STAR SHAPED BASE WITH GOLD LEAF, CREAM AND TAN METAL STEM TOPPED WITH A SCULPTED ROSETTE AND SPHERE COMBINED. FINISHED WITH AN ANTIQUED TAN SHADE DECORATED WITH FLORAL APPLIQUÉS AND MATCHING FINIAL.

H: 546MM W: 229MM
D: 229MM
1 X E27 60W
© 2004 PAUL GRÜER



POMPADOUR LUXE

TA1002 TABLE LAMP

MOULDED DUCK FEET SUPPORT THE GOLD LEAF BASE WITH ACID ETCHING WITH A STRIPED SHADE AND A POMPADOUR-INSPIRED ELEMENT ATOP THE STEM.

H: 1016MM W: 229MM
D: 229MM
1 X E27 100W
© 2001 PAUL GRÜER



BIRDLAND

TA1057 TABLE LAMP

CRACKLED PUTTY FINISH, GOLD LEAF, AND CREAM STRIPES DETAIL THE SHADE ABOVE A MELANGE OF NARROWING STRIPED STEMS IN A WASHED FINISH. ADORNED WITH CRYSTAL ACCENTS ON A TWO-TIER STAR-SHAPED BASE.

H: 1143MM W: 229MM
D: 229MM
1 X E27 60W
© 2001 PAUL GRÜER





DUMAINE

SC1046 SCONCE

THE GOLD LEAF DECORATIVE ELEMENT ON THIS WALL SCONCE COMPLETES METAL STEM AND SHIELD-SHAPED WALL PLATE WITH TAUPE UMBER WASH. ALSO FEATURES A CYLINDRICAL CREAM COLOURED FABRIC SHADE AND GOLD LEAF FLAME FINIAL.

H: 737MM W: 152MM D: 203MM
1 x E27 60W
© 2002 PAUL GRÜER

PALM LUXE

SC1140-1 SCONCE

THE GRACEFUL CURVED ARM SUPPORTS A CANDLE-LIKE FIXTURE DETAILED WITH SILVER AND WHITE STRIPES. ACCENTED WITH A SCULPTED BOBECHE, AND A CIRCULAR SCULPTED WALL PLATE.

H: 813MM W: 178MM
D: 254MM
1 x E14 60W
© 2008 PAUL GRÜER



FLAMBEAU

SC1027-2 SCONCE

A BLACK AND CREAM STRIPED MOULDED STEM TOPPED WITH A SCULPTED DECORATIVE BLOSSOM AND A TWISTED BRASS FINIAL. CREAM ARMS HOLD TWO CANDLE-LIKE STEMS AND GOLD LEAFED SHIELD SHADES.

H: 584MM W: 406MM D: 254MM
2 x E14 60W
© 2011 PAUL GRÜER





ARMORY TABLE

ST 1050 DEMI-LUNE CONSOLE TABLE

GOLD LEAF AND GLAZED DEMI-LUNE TABLE TOP WITH SILVER AND GOLD LEAF SCULPTED DECORATIVE FACE FRAGMENTS ON LEGS, GILDED SWIRL FEET.

H: 870MM W: 890MM D: 380MM
© 2003 PAUL GRÜER



VENETIAN TABLE

ST 1060 ROUND
LAMP TABLE

A DISTRESSED GOLD LEAFED BASE FORMS THE FOUNDATION OF THE SLITHERING STEM PUNCTUATED WITH DISTRESSED BALL-SHAPED ELEMENTS AND FESTOONED WITH A FEAST OF CUT GLASS CRYSTALS.

H: 610MM D: 410MM
© 2012 PAUL GRÜER

ROCHEBLAVE BOWL

SI 1149 DECORATIVE BOWL

ANTIQUED GOLD LEAF BOWL WITH DETACHABLE GOLD LEAF PEDESTAL BASE.

H: 190MM D: 370MM
© 2012 BENJAMIN BURTS



ISABELLA BOWL

SI 1148 DECORATIVE BOWL

ANTIQUED GOLD AND SILVER LEAF BOWL ON GOLD LEAF SCROLLED FEET.

H: 170MM D: 320MM
© 2012 BENJAMIN BURTS





FLAMBEAU

Lighting...New Orleans Style

DISTRIBUTED BY ELSTEAD LIGHTING LTD.

Head Office:

Elstead Lighting Ltd.
Elstead House, Mill Lane, Alton
Hampshire GU34 2QJ UK
t: +44 (0) 1420 82377
f: +44 (0) 1420 89261
w: www.elsteadlighting.com
e: enquiries@elsteadlighting.com



Elstead European Distribution Centre:

Elstead Lighting Sp. z o.o.
ul. Sportowa 12,
32-083 Balice
t: +48 124441021,
f: +48 124441966
e: biuro@elstead-lighting.pl